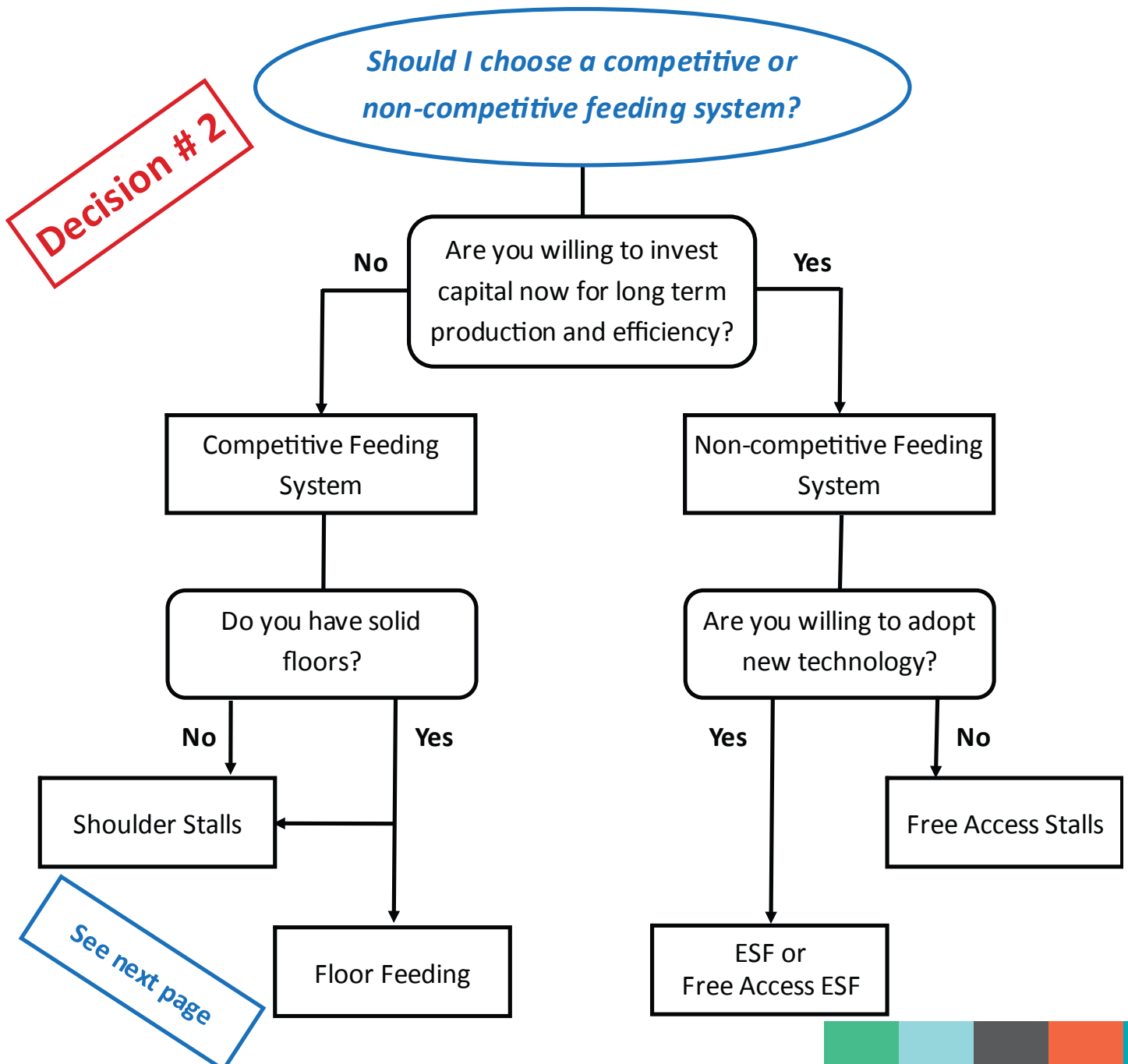
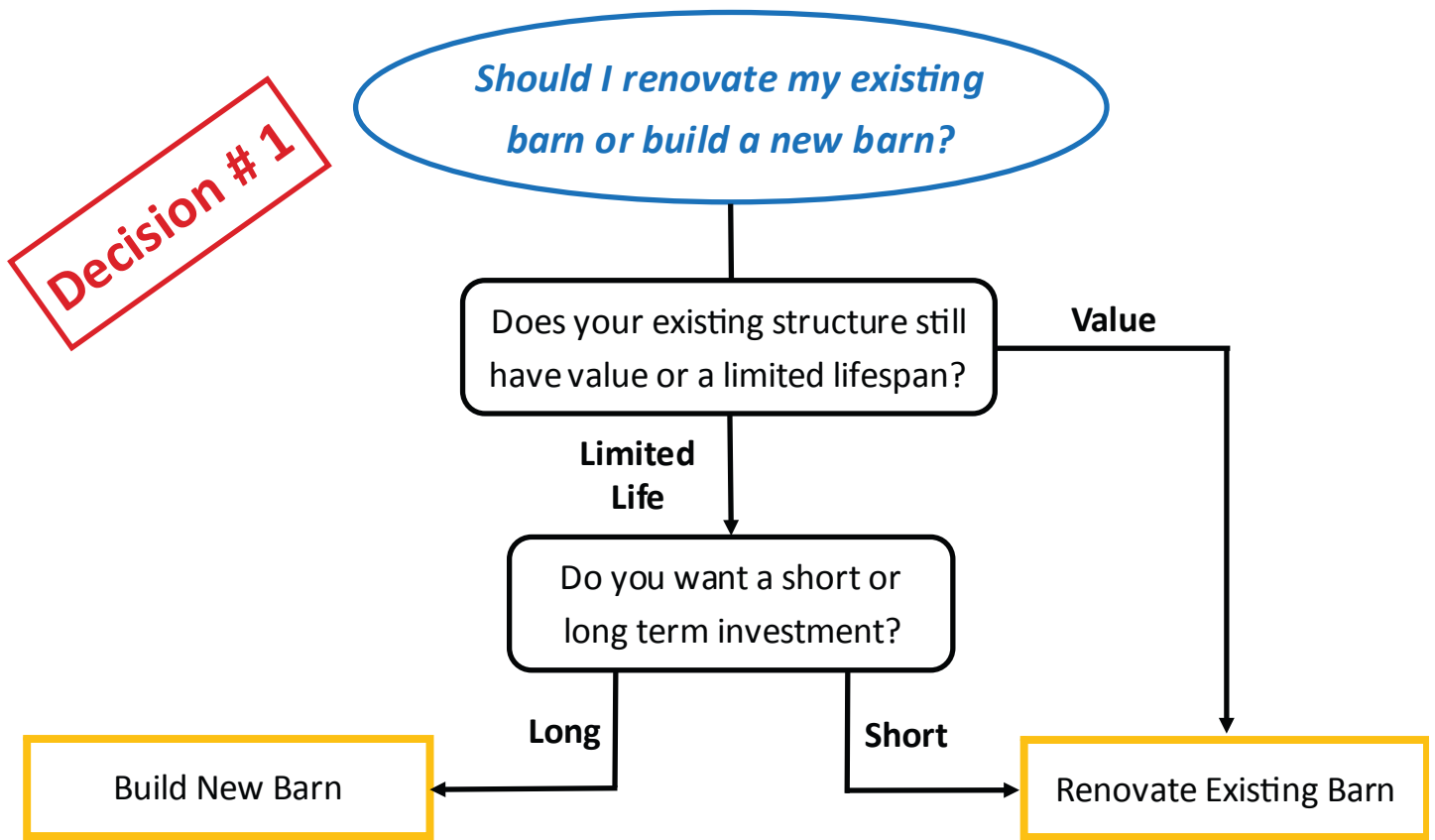


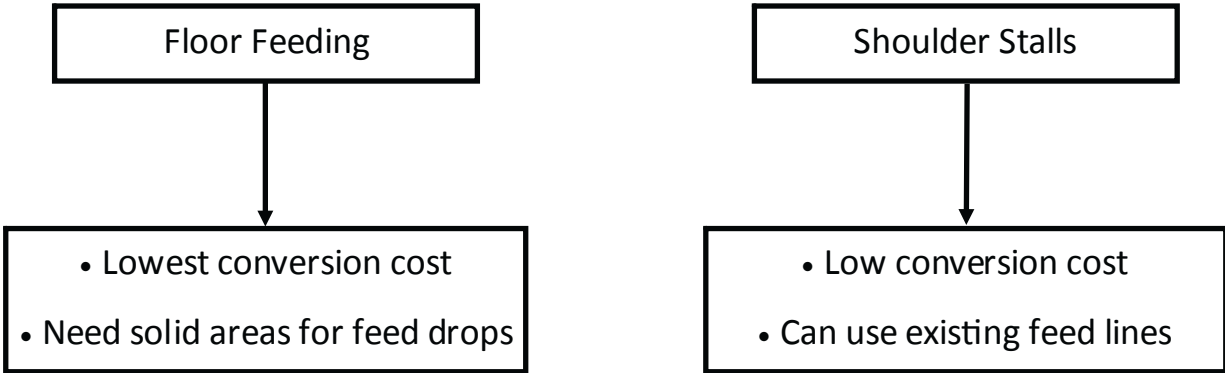
Group Sow Housing Decision Tree

Determining which group housing system to use can be a daunting task. There are multiple systems to choose from, and no hard rules to follow. This decision tree provides a rough guide based on key questions you need to ask yourself.





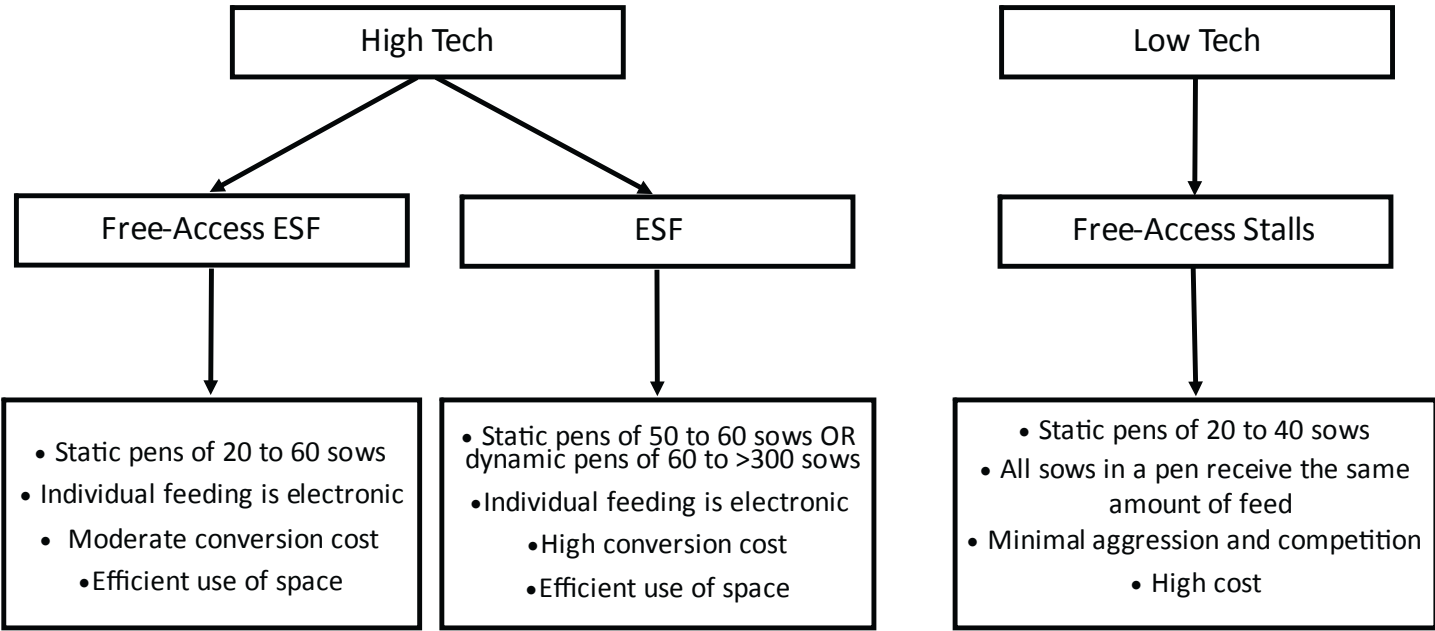
Competitive Feeding Systems



Competitive Feeding Systems:

- Suitable for small static groups of 10 to 20 sows
- Good stockmanship required: form small, uniform groups and monitor sows daily at feeding
- Expect variation in body condition, feed wastage and production challenges due to competition
 - Small pens require more space per pig in pens and more alleyways for access
 - Feeding aggression is reduced in shoulder stalls compared to floor feeding

Non-Competitive Feeding Systems



Non-Competitive Feeding Systems:

- Individual feeding allows for more uniform body condition
- Reduced feed costs due to less wastage and overfeeding
 - Can still have competition at the feeder stall
- Potential for precision feeding as technology and data management improve

Prairie Swine Centre would like to acknowledge the Ontario Ministry of Agriculture, Food & Rural Affairs Swine Team for their assistance in developing this decision tree.

For more information on group sow housing visit
www.groupsowhousing.com

